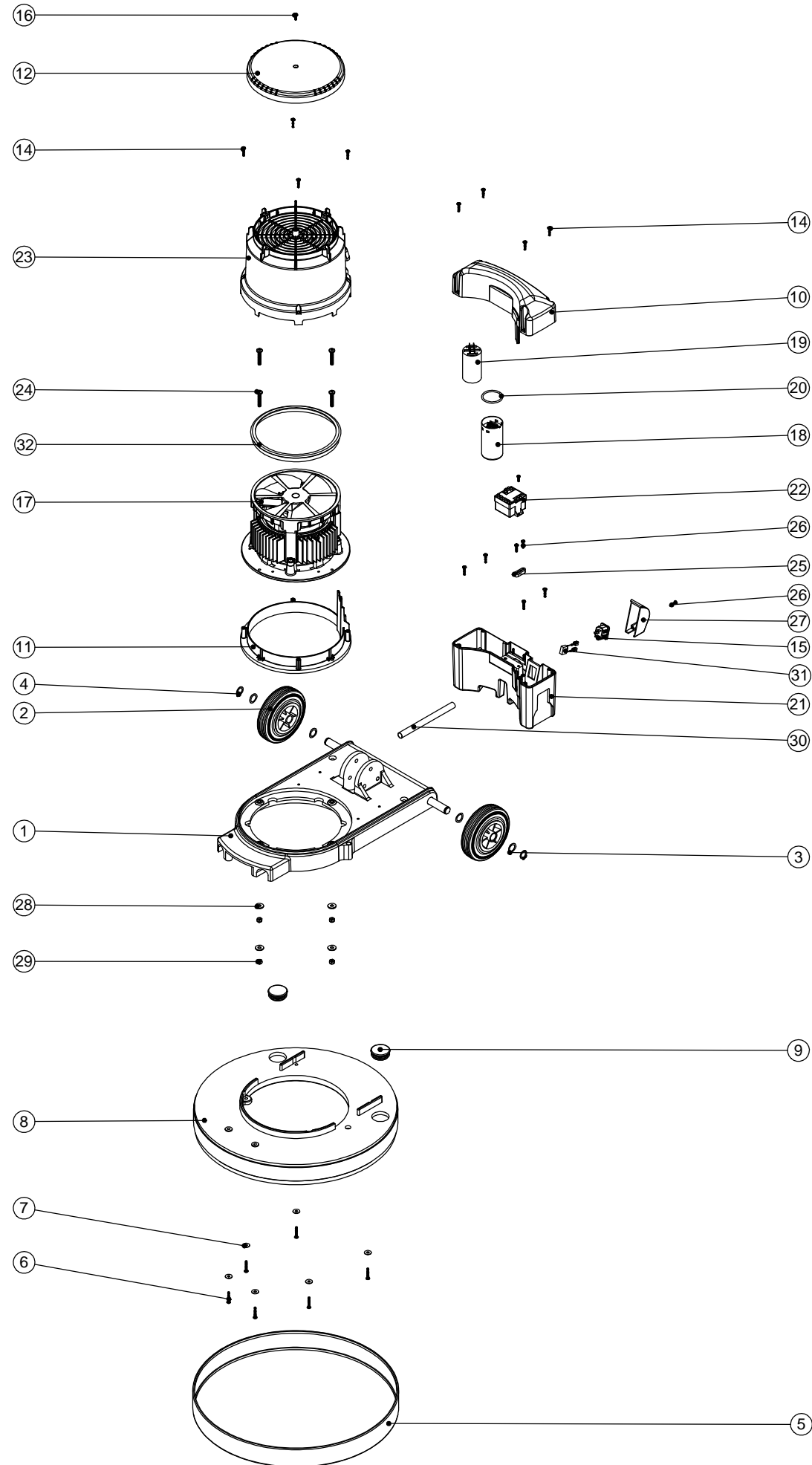


Numatic International Spare Parts

Model No: HFM 1015/1023 EXPLODED DRAWING ASSEMBLY

234893
DRAWING: DRW-12014 ISS:A01
27/09/2012

NB: FOR WIRING SEE DRAWING: DRW-11701



Numatic International Spare Parts

Model No: HFM 1015/1023 EXPLODED DRAWING ASSEMBLY

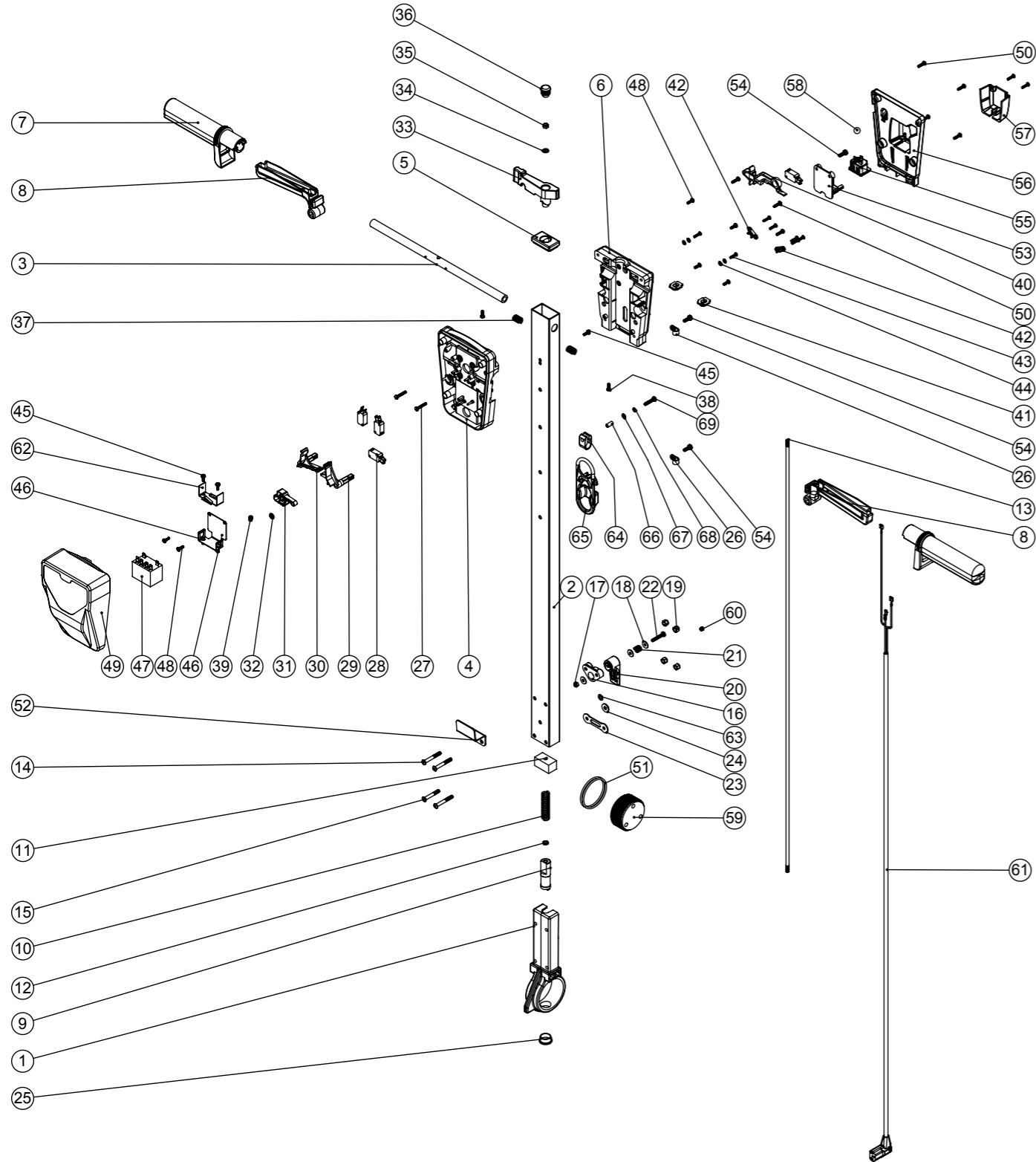
ITEM NO.	PART NO.	DESCRIPTION	QTY.
1	304260	MULTIDECK BASE MOULDING SUB ASSY	1
2	229060	WHEEL GREY BLACK HUB	2
3	219219	21.5MM X 16.3MM WAVE WASHER	4
4	229051	EXTERNAL CIRCLIP	2
5	206466	LIGHT GREY MEDIUM BUFFER RING (RAL 7042)	1
6	219369	No8 X 1 INCH LONG POZI PAN STAINLESS STEEL PLASTITE SCREW	6
7	219644	M5 FORM G STAINLESS STEEL WASHER	6
8	330010	DECK FOR DUSTROL Y SYSTEM	1
9	229400	BLACK END STOP	2
10	237505	HFM CAPACITOR BOX TOP MOULDING	1
11	237500	BOTTOM SECTION MOULDING	1
12	237503	LID MOULDING (HFM)	1
13	219318	No6 X 1/2 INCH LONG POZI PAN PLASTITE SCREW	1
14	219568	No8 X 3/4 INCH LONG POZI PAN STAINLESS STEEL SCREW	12
15	220584	RENDAR CLIP IN PLUG	1
16	219471	M4 X 12MM LONG POZI PAN SEMS SCREW	1
17	205201	INDUCTION MOTOR 2-POLE 1500W 220-240V 50Hz	1
18	205088	MOTOR START CAPACITOR 150MFD 280V C/W RESISTOR AND M8 STUD	1
19	208651	MOTOR RUN CAPACITOR 22uF C/W M8 STUD	1
20	208535	O RING 39.5MM ID x 3 DIA	1
21	330081	HFM CAPACITOR BOX BOTTOM MOULDING C/W INSERT	1
22	208582	230V SINGLE SPEED VOLTAGE RELAY (1000W)	1
23	330080	HFM MID SECTION MOULDING PRINTED (1000W)	1
24	219643	M6 X 35MM LONG STAINLESS STEEL POZI PAN SCREW	4
25	227008	BLACK CABLE CLAMP	1
26	219914	NO6 X 5/8 INCH LONG POZI-PAN PLASTITE STAINLESS STEEL SCREW	3
27	229213	PLUG COVER	1
28	219647	M6 FORM G STAINLESS STEEL WASHER	4
29	219642	M6 STAINLESS STEEL NYLON INSERT NUT	4
30	330086	MOTOR WIRE SLEEVE	1
31	230136	SUPPRESSOR ASSEMBLY	1
32	237412	HFM TOP MOTOR GASKET	1

Numatic International Spare Parts

Model No: HFM HANDLE EXPLODED DRAWING

NB: FOR WIRING SEE DRAWING: DRW-11789

Internal Code: 234899
 DRAWING: DRW-12376 ISS:A11
 TB 19/07/2016



Numatic International Spare Parts

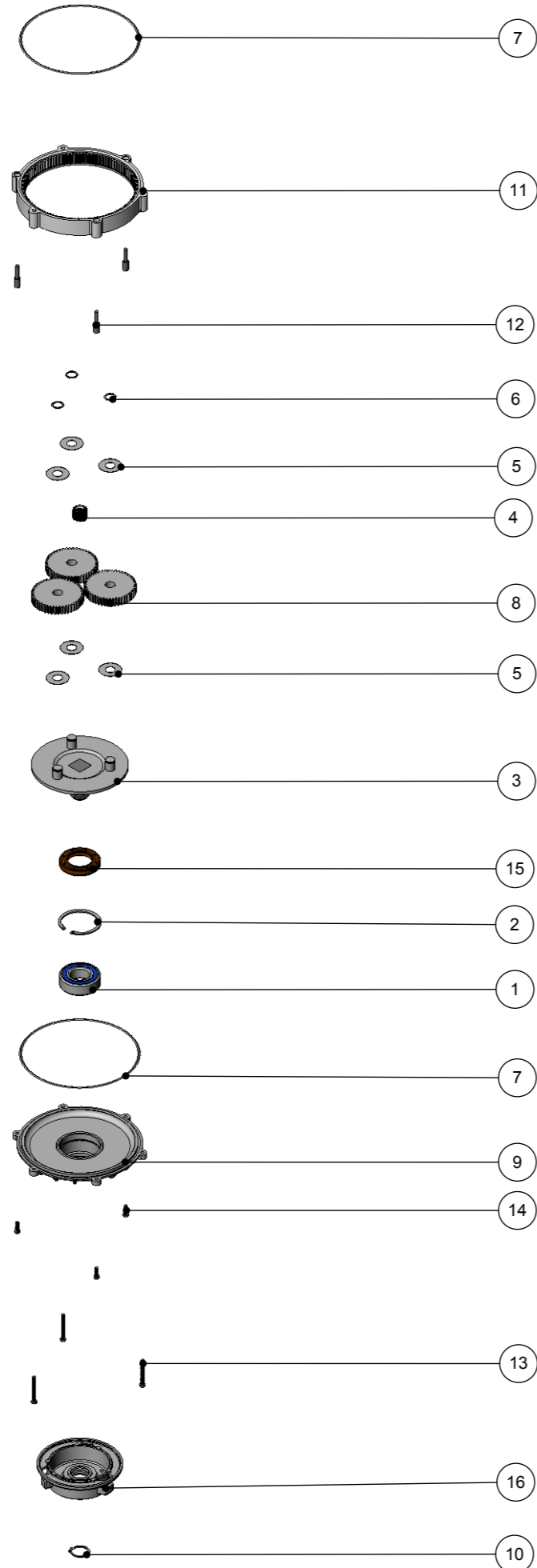
Model No: HFM HANDLE EXPLODED DRAWING

ITEM NO.	Item_No	DESCRIPTION	QTY.
1	229081	HANDLE CASTING MACHINED	1
2	429136	HFM HANDLE TUBE PAINTED (1025mm)	1
3	338269	CROSS TUBE	1
4	227576	FRONT INNER HALF MOULDING	1
5	227582	HANDLE PLUG MOULDING	1
6	227577	REAR INNER HALF MOULDING	1
7	227580	HAND GRIP MOULDING	2
8	227581	TRIGGER MOULDING (GREY)	2
9	229073	GEAR LOCKING PIN	1
10	229138	SPRING	1
11	229030	ANTI VIBRATION PAD	1
12	219099	M6 HALF NUT	1
13	208432	1035MM HANDLE LOCKING ROD	1
14	219881	M6 X 45MM SOCKET BUTTON HEAD SCREW	3
15	219807	M6 X 40MM LONG SOCKET BUTTON HEAD BOLT	1
16	227806	CABLE RELEASE BASE MOULDING	1
17	219076	M5 NYLON INSERT NUT	1
18	219644	M5 FORM G STAINLESS STEEL WASHER	3
19	219088	M6 NYLON INSERT NUT	4
20	227807	CABLE RELEASE TOP MOULDING	1
21	206599	SPRING (REF:C5514370)	1
22	219720	M5 X 30MM LONG STAINLESS STEEL POZI PAN SCREW	1
23	229139	CABLE CLAMP	1
24	219008	M6 FORM G WASHER	1
25	229099	25MM DIA HOLE PLUG	1
26	219393	P CLIP	2
27	219811	NO8 X 1 INCH LONG POZI-PAN SELF TAP SCREW	2
28	229483	SNAP ACTION SWITCH	4
29	227585	LEFT HAND SWITCH OPERATING LEVER MOULDING	1
30	227586	RIGHT HAND SWITCH OPERATING LEVER MOULDING	1
31	227587	CENTRE SWITCH OPERATING LEVER MOULDING	1
32	219805	4MM SPIREFIX	1
33	227583	ADJUSTMENT LEVER MOULDING	1
34	219493	M6 NYLON WASHER	1
35	219642	M6 STAINLESS STEEL NYLON INSERT NUT	1
36	20638V	19MM BLACK TUBE END STOP	1
37	219803	TRIGGER COMPRESSION SPRING	2
38	219270	NO8 X 1/2 INCH LONG POZI PAN SELF TAP SCREW	2
39	219804	SWITCH COMPRESSION SPRING	1
40	227584	INTERLOCK LEVER MOULDING	1
41	237467	BLANKING PLUG WITH HOLE	2
42	229669	LOLINE HANDLE CABLE CLAMP	2
43	219107	NO6.5/8 INCH LG.POZI-PAN.SCREW.STAINLESS STEEL.PLASTITE	8
44	219206	M4 FORM A WASHER	4
45	219471	M4 X 12MM LONG POZI PAN SEMS SCREW	3
46	303526	NUTSERTED RELAY MOUNTING BRACKET	1
47	206575	240V / 25A RELAY	1
48	219101	NO8 X 1/2 INCH LONG POZI PAN PLASTITE SCREW	6
49	229679	TRADELINE TWINTEC HANDLE FRONT COVER MOULDING	1
50	219105	NO8 X 5/8 INCH LONG POZI PAN PLASTITE SCREW	8
51	219254	O RING 3MM DIA X 60MM I/D	2
52	329000	HANDLE BRACKET	1
53	237425	PTO SUPPORT MOULDING	1
54	219045	M5 X 16MM LONG POZI PAN SEMS SCREW	4
55	220964	APPLIANCE OUTPUT SOCKET	1
56	237426	FM REAR COVER MOULDING	1
57	237427	FM PLUG COVER MOULDING	1
58	229050	12MM (STAINLESS STEEL) BALL BEARING	1
59	229074	ADJUSTMENT GEAR	1
60	229009	BLANKING PLUG	1
61	236161	HFM HANDLE CORD SET ASSEMBLY	1
62	206500	RELAY BRACKET	1
63	219007	M6 FORM B WASHER	1
64	219743	CABLE CLEAT	1
65	902312	CABLE STRESS RELIEF	1
66	903192	SPIROL SPACER SP100 5MM NOM ID x 14MM	1
67	219355	M5 FORM A STAINLESS STEEL WASHER	1
68	291084	WASHER.M5.SHAKEPROOF.STAINLESS STEEL	1
69	219575	M5 X 25MM LONG POZI PAN STAINLESS STEEL SCREW	1

Numatic International Spare Parts

Model No: HFM, NPR & NR RANGE GEARBOX EXPLODED DRAWING (ALL SPEEDS)

233756
DRAWING: DRW-4439 ISS:A04
22/10/13



Numatic International Spare Parts

Model No: HFM, NPR & NR RANGE GEARBOX EXPLODED DRAWING (ALL SPEEDS)

POS:	ITEM NO:	DESCRIPTION:	COMMENTS:
1	230094	62MM O/D X 30MM I/D X 20MM BEARING (WITH SEALS)	
2	230200	62MM INTERNAL CIRCLIP	
3	230291	PLANET CARRIER & PIN ASSEMBLY (50HZ STANDARD SPEED)	HFM/NPR 1515/S & NR 1500S
	230292	PLANET CARRIER & PIN ASSEMBLY (60HZ HIGH SPEED)	HFM/NPR 1523/M, NPR1545/X, NR 1500M & NRS450
	230294	PLANET CARRIER & PIN ASSEMBLY (HIGH SPEED)	HFM/NPR 1530/H & NR1500H
4	230027	12 TOOTH PINION GEAR (STANDARD SPEED)	HFM/NPR 1515/S & NR 1500S
	230025	20 TOOTH PINION GEAR (50HZ MEDIUM/60HZ HIGH SPEED)	HFM/NPR 1523/M, HFM/NPR 1545/X, NR 1500M & NRS450
	230028	24 TOOTH PINION GEAR (HIGH SPEED)	HFM/NPR 1530/H & NR1500H
5	230215	35MM X 15 I/D ALUMINIUM WASHER	
6	230015	15MM EXTERNAL CIRCLIP	
7	230001	V OIL SEAL	
8	230013	48 TOOTH SPUR GEAR(STANDARD SPEED 50/60HZ)	HFM/NPR 1515/S & NR 1500S
	230026	44 TOOTH SPUR GEAR (50HZ MEDIUM/60HZ HIGH SPEED)	HFM/NPR 1523/M, HFM/NPR1545/X, NR 1500M & NRS450
	230014	42 TOOTH SPUR GEAR (HIGH SPEED 50HZ)	HFM/NPR 1530/H & NR1500H
9	230226	DIE CAST BOTTOM PLATE ASSEMBLY	
10	230048	26MM EXTERNAL CIRCLIP	
11	214115	GEAR BOX MID SECTION	
12	208207	GEARBOX FASTENER WITH SLOT	
13	219706	M5 X 45MM LONG STAINLESS STEEL HEXAGONAL BOLT	
14	219904	M5 X16MM LONG HEXAGONAL STAINLESS STEEL BOLT	
15	230158	VITON OIL SEAL (BROWN)	
16	330024	DIE CAST CHUCK MACHINED & PROCESSED	